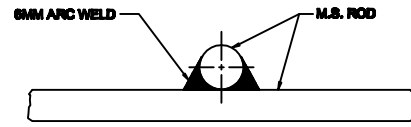
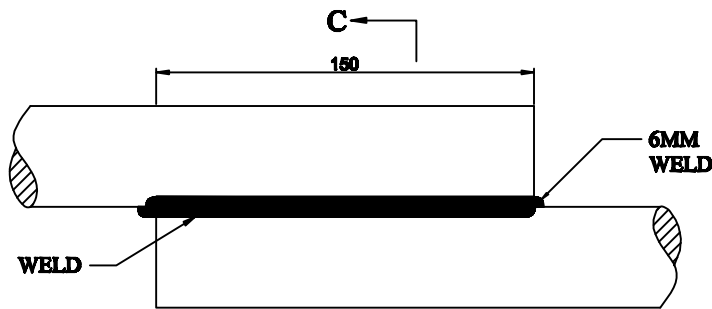


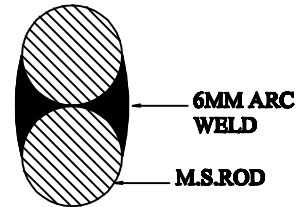
90° JOINT FOR  
MAIN EARTH MAT



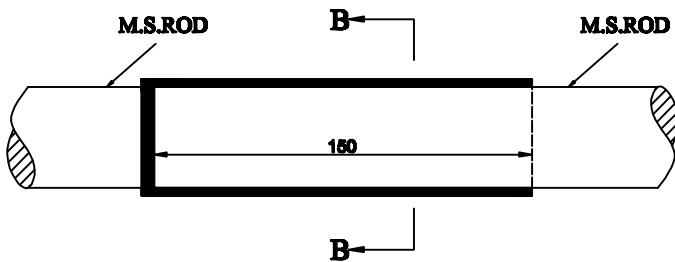
SECTION A-A



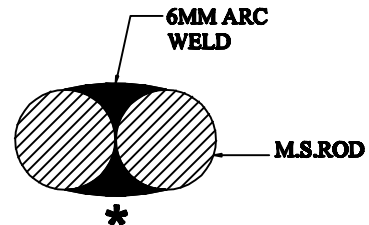
ELEVATION  
(OVERLAP JOINT IN VERTICAL PLANE)



SECTION  
C-C



ELEVATION  
(OVERLAP JOINT IN HORIZONTAL PLANE)  
(TO BE USED IN AN UNAVOIDABLE SITUATION)



SECTION  
B-B

**NOTE:**

1. ALL DIMENSIONS ARE IN MM UNLESS OTHERWISE SPECIFIED.
2. WHILE CONNECTING EARTH MAT ROD WITH THE EXISTING LAID CONDUCTOR THE BOTTOM WELD MARKED \* MAY NOT BE FEASIBLE AND HENCE NOT REQUIRED. HOWEVER THE SAME IS REQUIRED IF THE TWO CONDUCTORS ARE JOINED OUTSIDE, OVERLAP JOINT LINE VERTICAL PLANE TO BE USED TO THE EXTENT POSSIBLE.
3. WELDING SHALL BE DONE ALL AROUND TO THE EXTENT POSSIBLE.

EXECUTION PURPOSE



**GUJARAT ENERGY TRANSMISSION CORPN.LTD.**  
S.P.VIDYUT BHAVAN, RACE COURSE,  
VADODARA - 390 007

Typical Arrangement of Welding Joint

		<b>DRAWN:</b>	<b>CHECKED:</b>	<b>APPD:</b>	
		N.P.P.	P.B.M.	EE (ENGG) ACE (ENGG)	
<b>RD</b>	FIRST PREPARATION	<b>SCALE:</b>	<b>DATE:</b>	<b>DRG. NO:</b>	<b>SHEET:</b>
<b>REV:</b>	<b>DESCRIPTION:</b>	N.T.S.	01-08-08	GETCO / E / STD / P-012	05 OF 24
					<b>REV:</b> RD